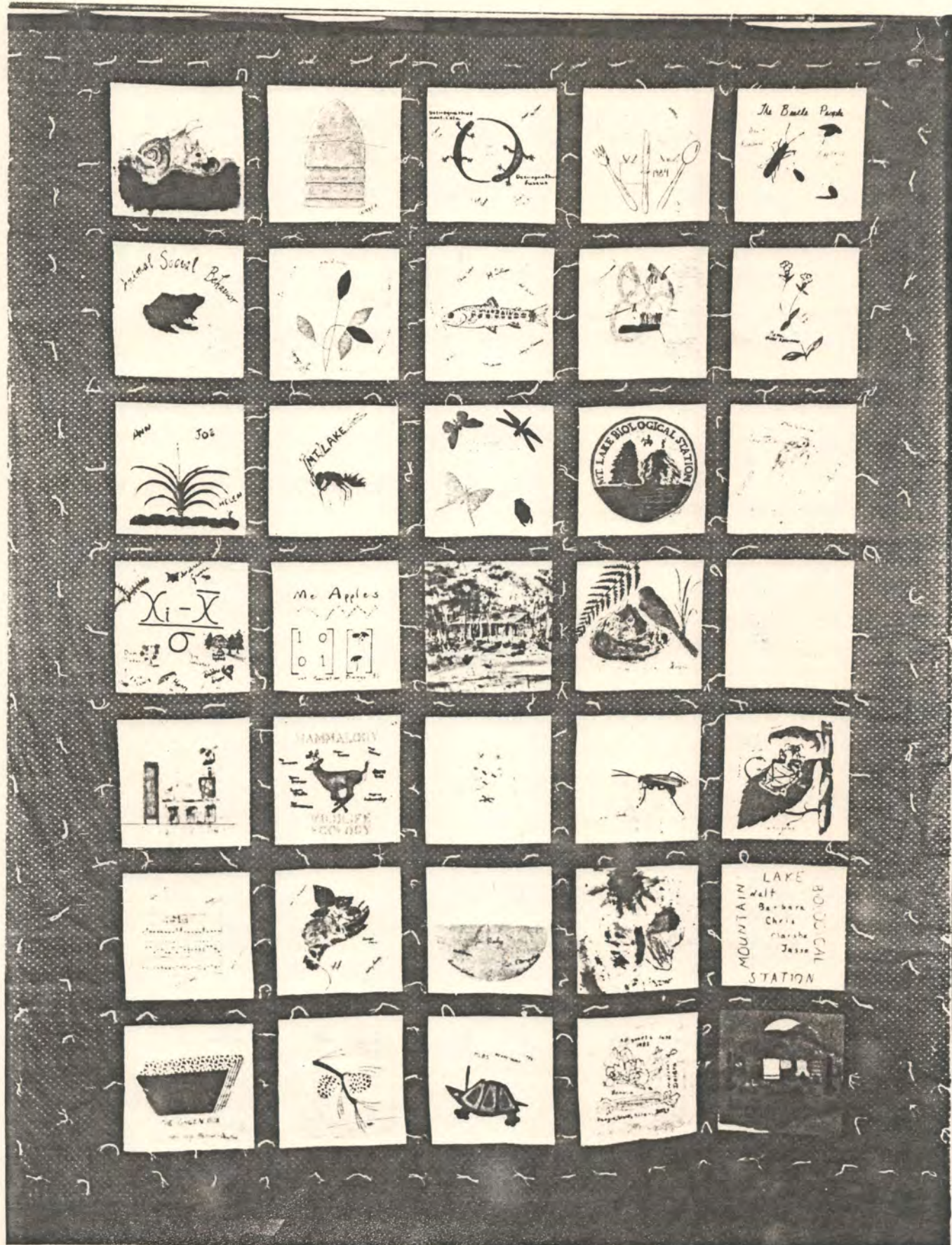


Mountain Lake Echoes

1985





MOUNTAIN LAKE BIOLOGICAL STATION

UNIVERSITY OF VIRGINIA
GILMER HALL
CHARLOTTESVILLE, VA. 22901
(804) 924-3151

December 10, 1985

Dear Fellow Mountain Lakers:

On my last trip to Mountain Lake this fall the sky was gray, trees were bare, and frost was in the air. The mice had donned their winter coats and were storing acorns for the coming winter as Jesus, Kathy, Sherri, Maria, and I closed our traps for the season. The electrophoresis lab had long been shut down, Walt had the lab building and cabins boarded up for the winter, there were no telephones ringing, classrooms were empty, no parties in the pavilion, and worst of all no volleyball games. The Station takes on a new look with the changing seasons and along with it a different perspective on my part.

After a post-summer vacation to the mountains and deserts of western United States, I now have time to reflect on what the summer of 1985 meant to me. One of my main concerns each year is the teaching program. This year our faculty brought their expertise from as far as Maine and Florida to provide what I now consider a teaching program unique to Mountain Lake. The enthusiastic response shown by students and faculty alike was contagious and spread throughout the Station.

Our research program has grown considerably over the last seven years and now includes 19 principal investigators. Our research personnel are not only making substantial contributions to the scientific community, but also provide the basis for the intellectual stimulation which is prevalent in all aspects of Station life. Research projects such as Dave's seven-year study on milkweed beetles, Helen's project on plant-fungus interactions, Adrienne's observations of sexual selection in newts, Hubert's long-term study on habitat selection and competition in salamanders, Felix's work on the behavioral genetics of willow leaf beetles, Joe's continuous observations on the breeding biology of fly poison, Ellen, Val, and Licia's study of biparental care in juncos, Charlie's systematic collections of ferns, Blaine and Deb's explorations into slave-making in ants, Jim's study on breeding biology of vireos, and Les and Bev's newly-founded project on pollination biology have helped to escalate Mountain Lake to one of the top inland field stations in the country. I am glad that Mountain Lake provides a summer home for these investigators.

The day-to-day operation of the Station would not be possible without the continued efforts of our support team. Our new caretaker, Walt Nimmo, has made substantial improvements on the buildings and grounds, and his wife, Barbara, was welcomed as our new staff librarian. A very special thanks to Mary Ann who helps me break a few rules in contending with University bureaucracy during the summer and to Marilyn Ladd who helps me to maintain my sanity during the academic year back in Charlottesville. Wayne has been my right-hand man for two years

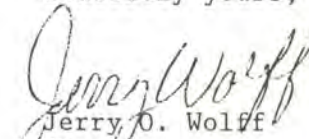
and is always there to give Mary Ann and I the support we need. Their services are invaluable and I can not thank them enough.

The mammal project had another successful year and much of the credit goes to Jesus, Kathy, Ramone, and Sherri who kept the traps open and gels running while I was playing administrator. The fruits from our efforts are now coming in as Ramone is analyzing data and Kathy is completing her thesis.

Some of my reflections go back to the record-breaking open house with over 300 in attendance, our visiting seminar speakers, most notably Paul Sherman and the Walton Lecturer John Alcock, Saturday night pavilion parties and Sunday night cookouts, periodic visits from Miles and Ruth, Jack Colley winning the Naturalist's Contest, and the end-of-the-semester talent shows. Perhaps the biggest highlight of the year was the prize I received for winning "The Mice is Right" game show by beating Jesus and Kathy in putting a trap together. My first place prize was a handmade quilt consisting of originally designed patches contributed by everyone at the Station. Hopefully, you have noticed that a picture of the quilt made the cover of the Echoes. I am deeply touched by this gift and the memories it bestows will remain forever. Thank you.

It is now time for you to peruse the Echoes and reflect once more on your stay with us at Mountain Lake. I hope you have good memories and will come back again soon. Blaine Cole has assumed the duties of the Director and has put together an excellent program for next summer. I invite you all to come back and visit us. Have a good year and hope to see you next summer.

Sincerely yours,

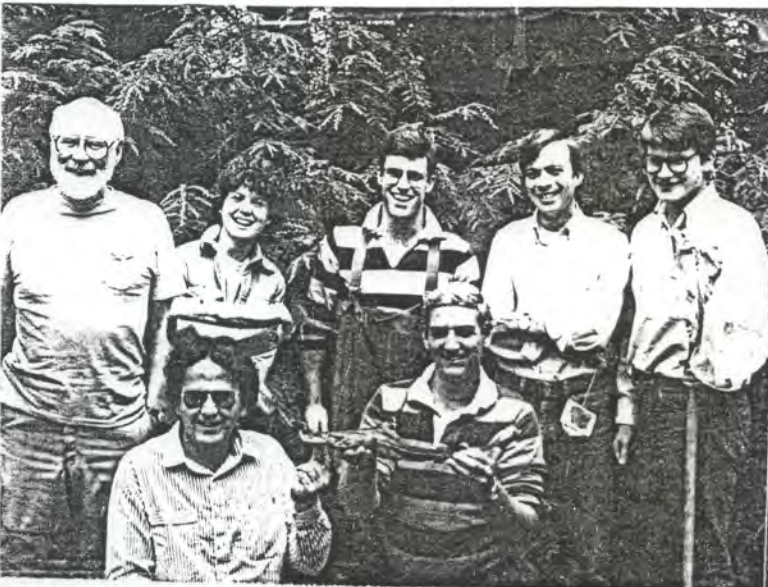

Jerry O. Wolff
Director



ALLOZYME L to R, Row 1: Gail Taber, Charlie Werth, Sherri Graves, Robyne Lau, Elaine Luna, Karen Cruz, Row 2: Robert Steele, Jeff Dobbins



FIELD BOTANY L to R, Row 1: Elaine Luna, Jeff Stucker, Judy Keffer, Row 2: Ashton Berdi, Gail Taber, Frank Watson



BIOLOGY OF FISH L to R, Row 1: Art Bulger, Jeff Dobbins, Row 2: Jim Bowyer, Tonya Edwards, Chris Costanzo, Peter Galusky, Tom Wills



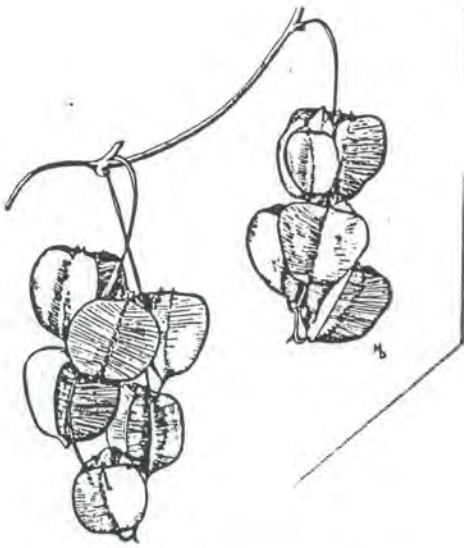
PLANT-ANIMAL INTERACTIONS L to R, Row 1: Karen Cruz, Bev Rathcke, Hannah Goon, Sherri Graves, Kathy Lemon, Bernie Roche, Row 2: Robyne Lau, Martha Dahlen, Ian Barton, Carroll Hall



SCIENTIFIC ILLUSTRATION L to R, Row 1: Elaine Skoumbouris, Esta Johnston, Nancy Crown, Row 2: Chris Costanzo, Martha Dahlen, Mary Ratliff.



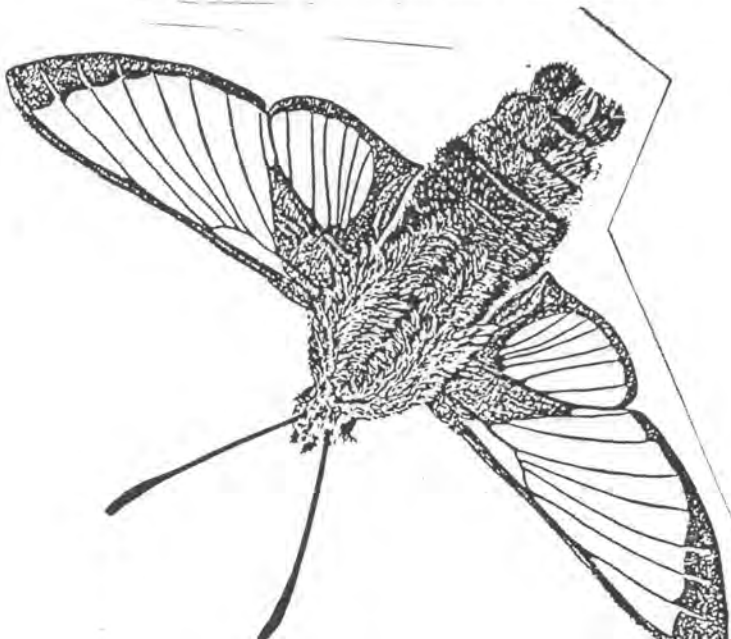
BIOLOGY OF BIRDS L to R, Row 1: Robert Steele, Elaine Skoumbouris, Row 2: David Johnston, Nancy Crown, Mary Ratliff, Jane Kidd, Sarah



PLANT-ANIMAL
INTERACTIONS

How do you characterize a group of looney tunes who found class unity through the use of a small leather bean bag? I don't know, but I've been told that if I don't get this article in now, Echoes won't be out for Thanksgiving, and this turkey doesn't want to get roasted! So I decided to do a little roast myself! No offense intended - you know I love you all! (Thanks for the help Kathy!)

- To Martha: What do vegetarians eat on Thanksgiving?
To Cherry: Rumor has it that you tracked down a fluorescent turkey for Thanksgiving dinner. Any validity to this?
To Karen: Who's blood do you suck on Thanksgiving?
To Ian: Please try to suppress the urge to break out the hacky sack after Thanksgiving dinner. The folks will not be amused.
To Hanna: You are so in love with life every day. Is Thanksgiving any different?
To Kathy: What do midwesterners break on Thanksgiving?
To Bernie: That's me. Well here goes...What do you step in on cow fields on Thanksgiving?
To Bev: Which Ericaceous shrubbery makes the best Thanksgiving centerpiece?
To Carol: Do you wear a hat on Thanksgiving too?
To Earl: What do the Dead Kennedys do on Thanksgiving?
To Robyn: What is wimp rock?



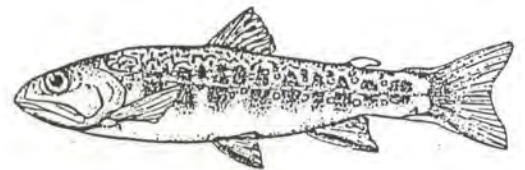
SCIENTIFIC ILLUSTRATION

Esta was our leader most fearless
Whose carbon dust mushroom was peerless
She said, "Draw that pine cone!"
And we started to moan.
The prospect seemed utterly cheerless.



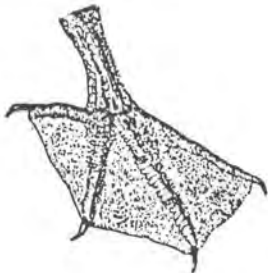
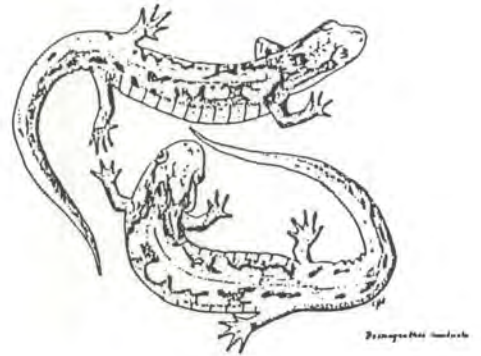
Now pencil was Martha's forte
And coquille struck her as O.K.
But as for flexible pen
She said, "Never again!
I've no use for ink anyway."

Chris was a fish man, by gar
Whose name was known near and far
For his stippling bout
With a juvenile trout
That had pickled for years in a jar.



Poor Jeff was the man by the sink
Who found a new way to do pen and ink
When the water would splatter
He'd say, "That doesn't matter.
I'll use an umbrella, I think."

Carroll had a definite feel
For making his drawings seem real
But he astonished us all
When he started to scrawl
The Bobbsey twins on coquille.



Here's to Dave, the invisible man
To draw only birds was his plan
He said, "I'll try my luck
With a Brush-tailed duck,
But first I've got mist nets to scan."

Mary had searched far and wide
 For a flower to stipple with pride
 But she neglected to flip
 Her acetate strip
 And stippled it on the wrong side!



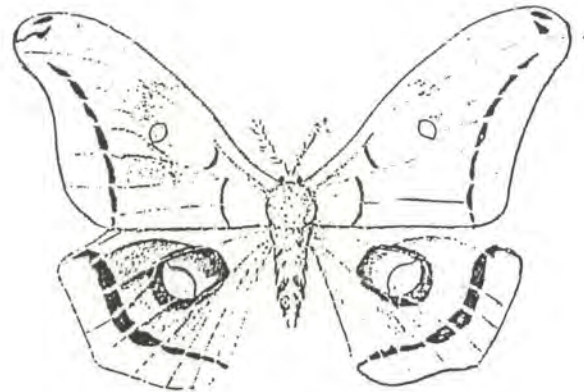
Anne had an insectical mind
 She drew every one she could find.
 She'd commute up the hill
 And sketch bugs with such skill
 They'd crawl away if she left them behind.

Nancy first thought her stipple was crude
 'Tho the measurements were carefully construed
 "This should not be allowed"
 She firmly avowed
 "Sand dollars ought not to be skewed."

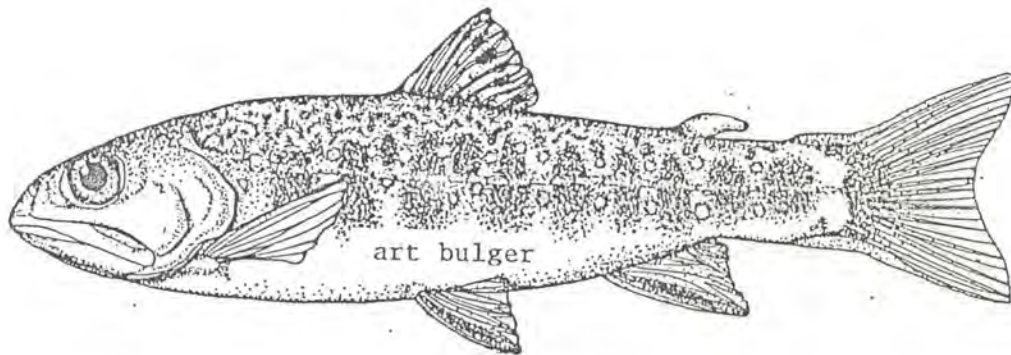


Elaine sat in her seat with a scowl
 "I hate scratchboard!" she'd howl.
 She scritch'd and she scratch'd
 'Til an owl foot hatched,
 But where was the rest of the fowl?

Now Sara could easily be seen
 At work in the room of drawing
 By the bright light of noon
 Or dark of the moon
 And at all of the hours between.



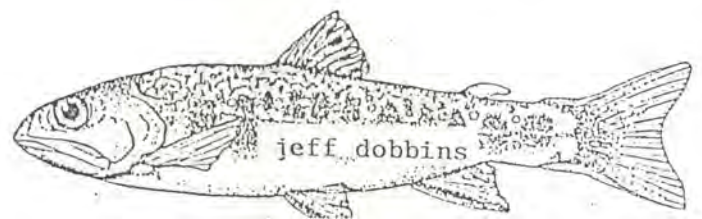
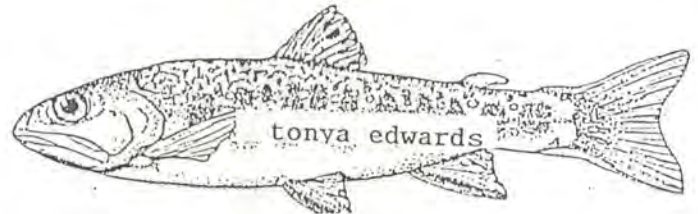
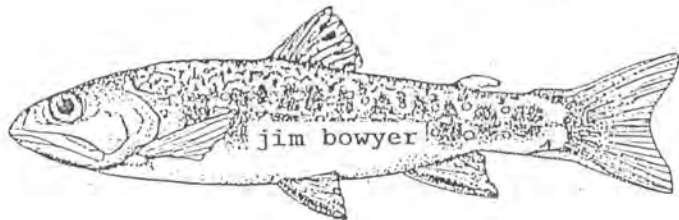
Such was our illustrious crew
 All anxious to try something new
 Whatever disaster
 They knew they'd outlast'er
 When Esta said, "Draw," then they drew.

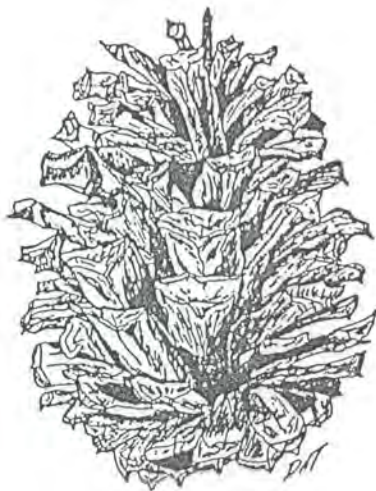
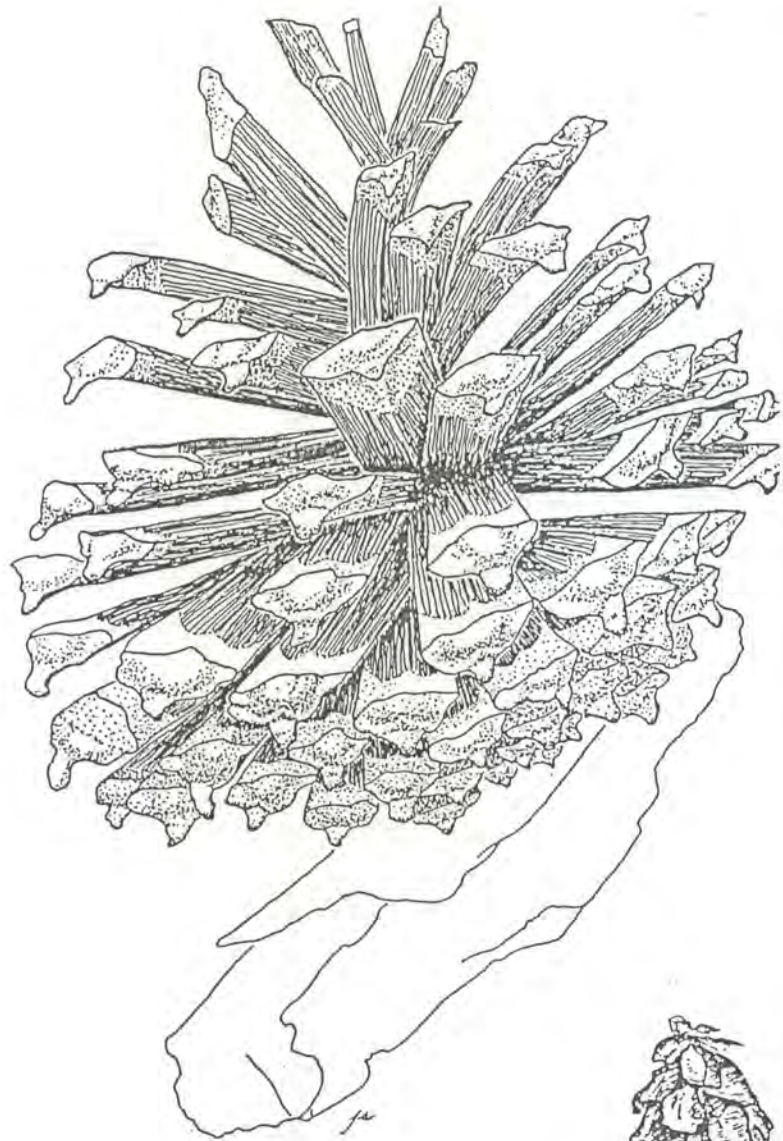
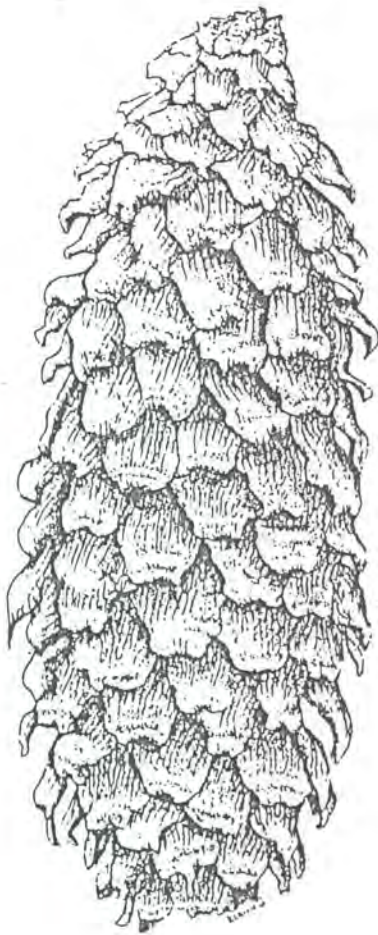


A most unusual way to begin a course, I thought. Most of us had driven several hours already to Mt. Lake, so it seemed only fitting to pack up the class and drive 5 more to Knoxville the third day! Much fun though. Fish diversity in the Tennessee River Valley was quite impressive. More memorable, perhaps, were the giant \$3 pitchers of Tom Collins.

Art really did a good job of lecturing and leading field trips. Unfortunately, he didn't fall in quite as much as the rest of us. Along those same lines, first prize to Tonya for the wet T-shirt contest.

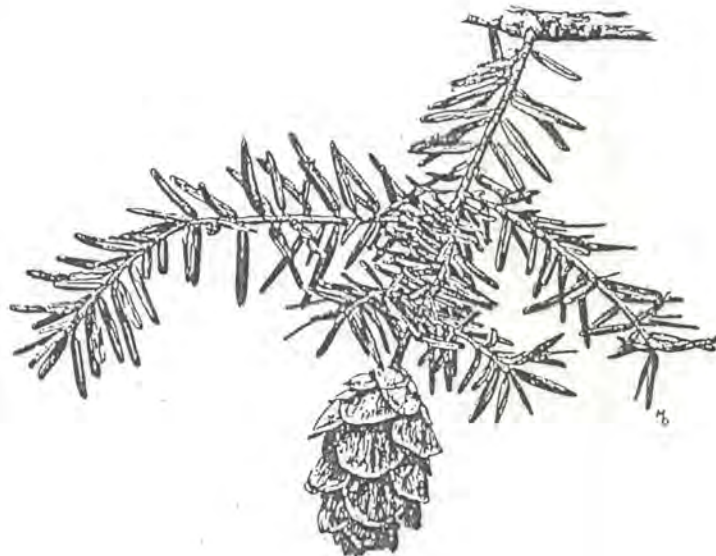
The marathon session of identifying minnows was dizzying, perhaps due to the formaldehyde more than anything. So poor Art lugged them back to C-ville to check them all. Did we really get any right at all, Art?






OH, GIVE ME A CONE


Oh, give me a cone and please leave me alone,
So that I can draw scales all day--
For seldom are seen the shadows and sheen
Oh heck, I'll do it in my own way!



BIRDS '85



The bird class had a very busy session. Our frigate bird of a teacher, Dr. Johnston, was full of hot air, thus we learned lots of interesting facts about the origin and evolution of birds, in addition to learning many different species, families, and orders. We drew many special characteristics, such as feathers, bills, and feet and spent many hours examining skins and learning the difference between plumages and molts. We also learned lots of physiology which was later examined using real birds on which we were able to demonstrate our nearly professional taxidermal skills.



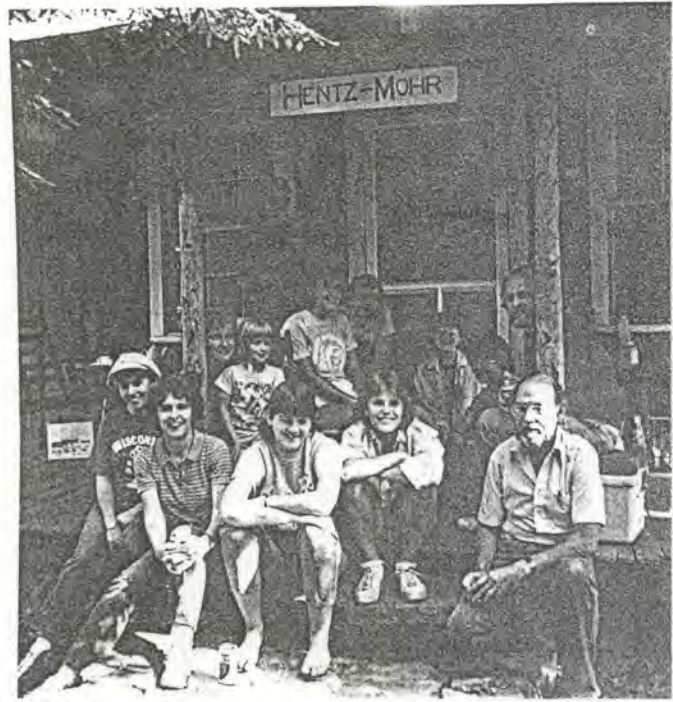
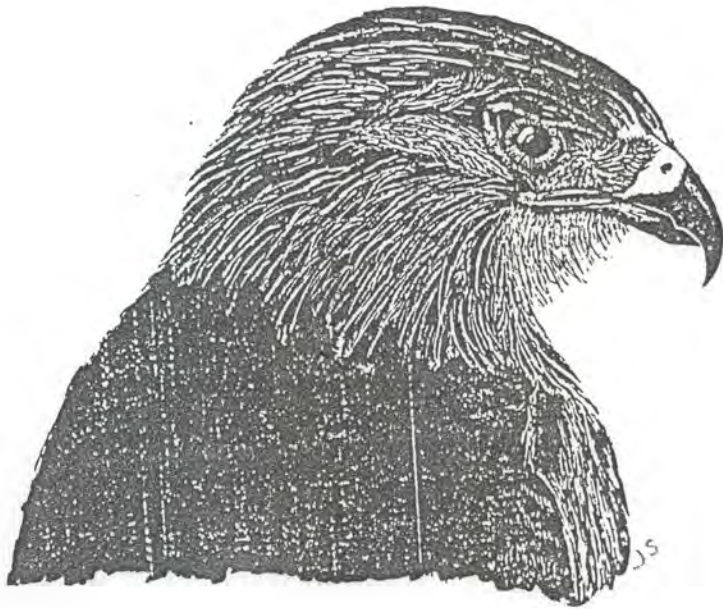
In addition to regular lectures, we were fortunate to have two interesting guest speakers, Glen Woolfenden and Val Nolan, speak to our class about their special interests in the world of birds.

When not in class we were busy working on the seemingly never-ending census, with eyes always peeled for possible new nest sites. We also had our own individual bird family. The majority of us had solitary vireos at one time or another to watch, observing incubation, feeding, and for a few lucky class members, fledging of the young.

Trips down the mountain resulted in exciting sightings of birds not present around the station, such as Baltimore and orchard orioles, Warbling and Yellow-throated vireos, a Green heron, and Blue grosbeaks, just to name a few. A trip to Bald Knob provided a relaxing afternoon watching hawks, vultures, and ravens, as well as interesting cloud formations.

Another interesting activity was mist-netting which enabled us to catch and handle birds and see them at very close range.





It was an interesting session and in addition to a frigatebird, our class contained several Boobies and Shovelers--no names mention to protect the innocent.

Our motto was:

We are the birds
We fly the world
We are the ones that flock together so
Best keep your mist nets furled.

(Sung to the tune "We Are the World")



Sarah Blanton
Nancy Brown
Jane Kidd
Mary Ratliff
Alice Rolls
Elaine Skoumbouris
Robert Steele
David Tatum

Dave Johnston

JULY 4TH

EVENT	FIRST	SECOND	THIRD
SNAIL RACE	Kathy Lemon (A) "Daisy" 12:41		
ROAD RACE (MENS)	6:18 Rob Raguso (P)	Ron Reed (P)	Walter Bowyer(A)
ROAD RACE(WOMENS)	8:08 Alice Rolls (A)	Gail Taber (P)	Lynn Broaddus (A)
ROAD RACE(OVER 30)	Charlie Werth(A)		
LAWN BOWLING	Jerry Wolff (P)	Mary Ann Angleberger(P)	
LAWN DARTS	Wayne Angleberger(P)	Jerry Wolff(P)	
CROQUET	Tiki Murray (A)	Alice Istock (P)	Art Bulger(P)
SWIMMING	Sarah Blanton (P)	Walter Bowyer (A)	Ron Reed (P)
ROCK SKIPPING	Wayne Angleberger(P)	Jerry Wolff (P) Robert Steele (P)	Tommy Angleberger(A)
GREASED WATERMELON	ANIMALS		
PING PONG	Chris Costanzo(A)	Tonya Edwards (P)	
BADMINTON	Wayne Angleberger(P)	Charlie Werth (A)	
HORSESHOES	Ron Reed (P)	Wayne Angleberger(P)	
H-O-R-S-E	Chris Costanzo (A)	Sarah Blanton (P)	
SEED SPITTING	Wayne Angleberger(P)	Charlie Werth (A)	Jeff Dobbins (A)
SEED SPITTING	Mary Ann Angleberger(P) Tiki Murray (A)		Kathy Lemon (A)
VOLLEYBALL	PLANTS		
VOLLEYBALL	PLANTS		
VOLLEYBALL	PLANTS		

PLANT TEAM CAPTAIN: RON REED

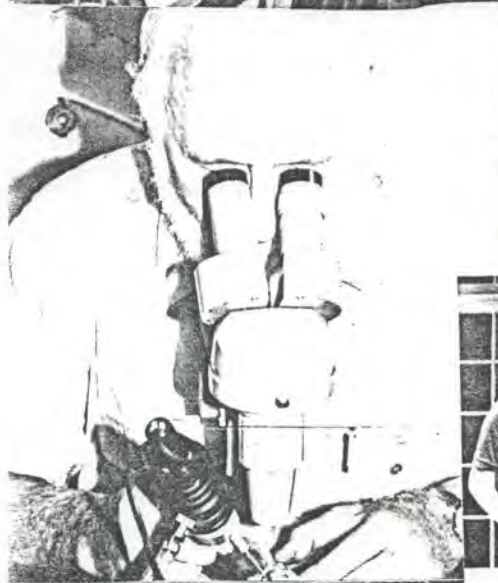
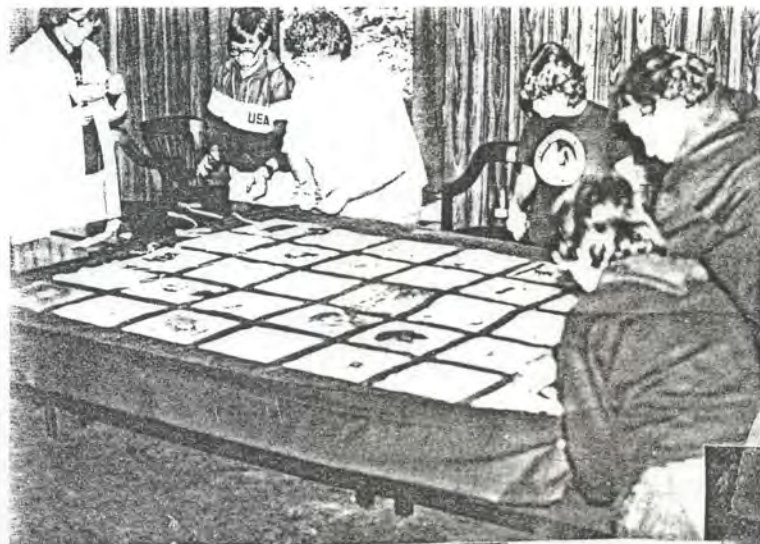
ANIMAL TEAM CAPTAIN: JEFF DOBBINS

MOST VALUABLE PLANTS: Jesus Maldonado

MOST VALUABLE ANIMAL: Tiki Murray

PLANTS: 88

ANIMALS: 53



COGNAC

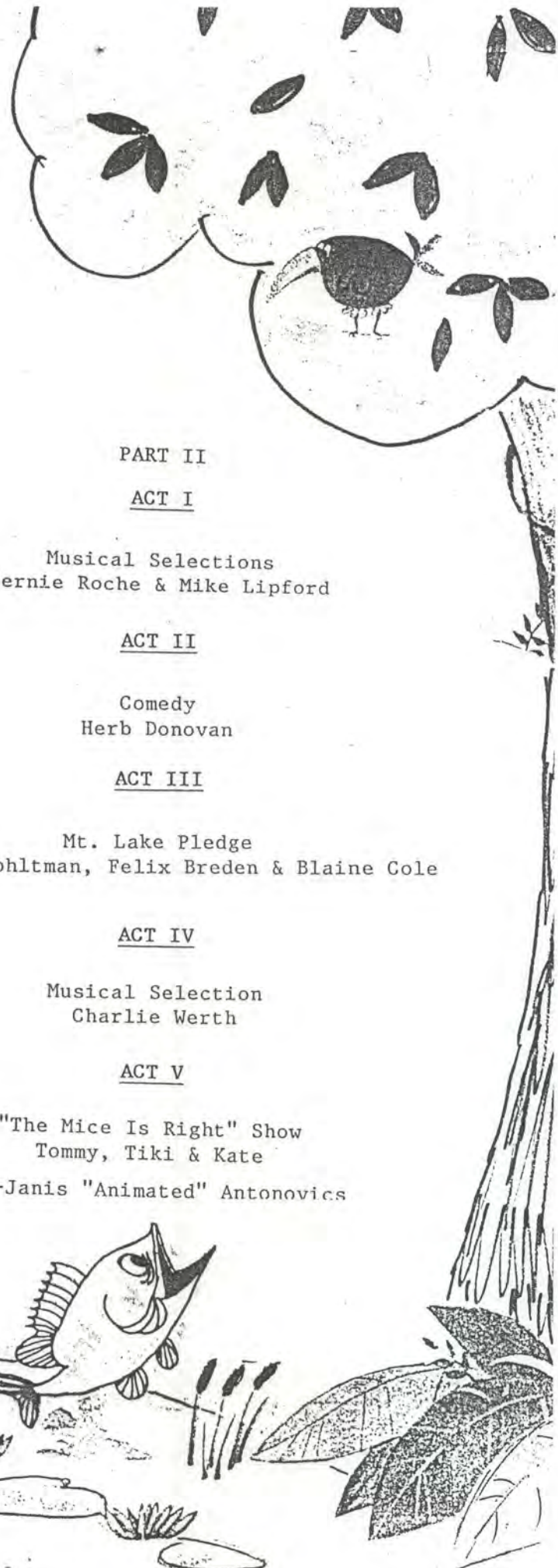
MAISON







SALT POND FOLLIES



PART I

ACT I

Feathered Fashions
"Bird" Class

ACT II

"Art Show"
Illustration Class

ACT III

A song or two
Bernie Roche

ACT IV

Traditional Ballads
Faculty

O-FISH-AL M.C.-Art Bulger

PART II

ACT I

Musical Selections
Bernie Roche & Mike Lipford

ACT II

Comedy
Herb Donovan

ACT III

Mt. Lake Pledge
Melissa Wohltman, Felix Breden & Blaine Cole

ACT IV

Musical Selection
Charlie Werth

ACT V

"The Mice Is Right" Show
Tommy, Tiki & Kate
M.C.-Janis "Animated" Antonovics



Who's Gonna...

Chorus: Who's gonna ring the bell?
How will you ever wake?
Who's gonna run you ragged
When you leave Mountain Lake?

Charlie: Who's gonna make your buffers?
Who's gonna help you score?
And who's gonna fix your electrode trays?
When the session's over?
(Chorus)

Dave: Who's gonna show you that pretty little bird?
Who's gonna shush your talk?
And who's gonna find all those nests for you?
When he's turned in his chalk?
(Chorus)

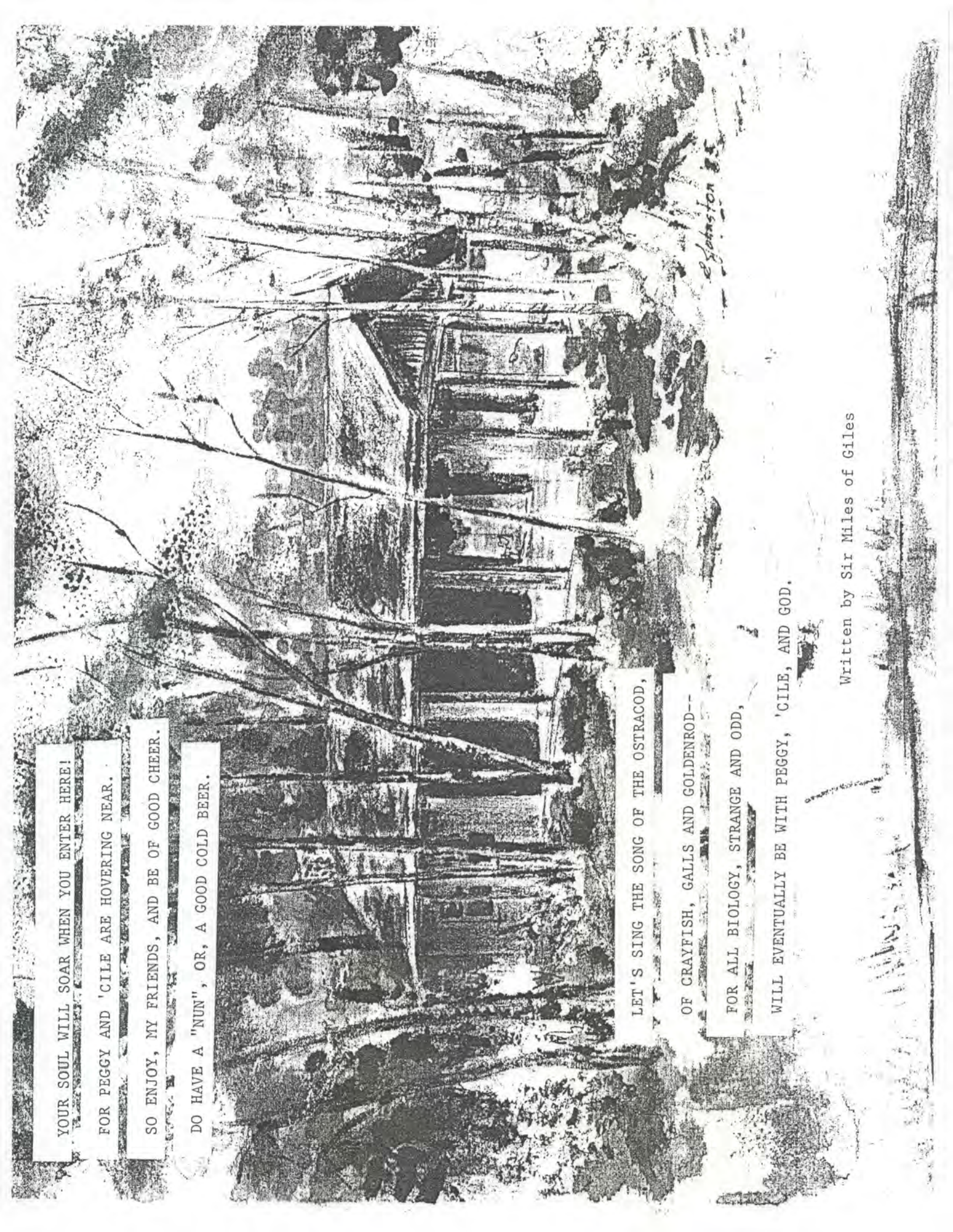
Esta: Who's gonna show you how to draw
The simple little pine cone?
And who's gonna make you do flexible pen
After we're done and gone?
(Chorus)

Frank: Who's gonna take you down shale slopes
Who's gonna quiz you til you learn
And who's gonna make you slog through the bogs
Who's gonna learn ya them ferns?
(Chorus)

Art: Who's gonna count those scales for you
Who's gonna pluck those teeth.
And who's gonna gull those seines for you
To find those darters beneath?
(Chorus)



Pansy, Pansy, we've got a song for you,
I'm half crazy all for the food you stew!
We won't be a skinny bunch when we have left your lunch--
But we'll feel neat and so complete
When the food has been cooked by you!



YOUR SOUL WILL SOAR WHEN YOU ENTER HERE!

FOR PEGGY AND 'CILE ARE HOVERING NEAR.

SO ENJOY, MY FRIENDS, AND BE OF GOOD CHEER.

DO HAVE A "NUN", OR, A GOOD COLD BEER.

LET'S SING THE SONG OF THE OSTRACOD,

OF CRAYFISH, GALLS AND GOLDENROD--

FOR ALL BIOLOGY, STRANGE AND ODD,

WILL EVENTUALLY BE WITH PEGGY, 'CILE, AND GOD.

Written by Sir Miles of Giles

E. Johnston

WALTON PAVILION DEDICATION--AUGUST 2, 1985

A Dedication Prayer by Rev. Al Paine

Great Spirit:

We are here to celebrate, to remember, and to honor;
To celebrate life, and knowledge, and relationships;
To remember those who added greatly to all of these in our
own lives and studies;
And to honor the continued influence of Margaret and Lucile
Walton.

We pray that our little memories will encourage greater
aspirations:
Memories of evening walks and conversations,
Of home-made cookies and Christmas cards,
Of plant galls and ostracods,
And that such remembrances will always nourish the unique
spirit of Mountain Lake.

Bless, we pray, this new pavilion,
And may its multi-purposes serve to symbolize
the important balance between fun and seriousness,
work and play, questions and answers.

Let us never forget the values of friendship, the importance
of community,
and the immeasurable influence we have upon each other.

As we build upon these memories, and recall the joys of
discovery,
the mysteries of human interaction,
and our experiences of awe at Thy Divine Nature,

Let us realize also the tremendous significance
of character beyond so-called characters
of companionship that transcends age,
and of noble people with the common touch.

And as our memories become legends, our ideas become truths,
and summer companions become lifetime friends,
May the inspiration of these remarkable ladies in years past
strengthen our purpose, clarify our goals,
and increase our understanding in the years ahead.

AMEN

WALTON MEMORIES

"Misses Peggy and Lucile Walton taught me in junior high (Peggy) and high school (Lucile) lo these too many years ago. I felt privileged to be at Mt. Lake the summer the lovely Pavilion was dedicated in their honor.

Although this was my first stay at Mt. Lake, I now know why they returned again and again. Where else can one combine such a stimulating work atmosphere with such a delightful climate (in Virginia, in the summer!) even if heaven, on occasion, is a dry pair of shoes after Dame Nature has overwatered the vegetation. The ferns around the biological station are every bit as large and luxuriant as those of the Pacific Northwest. Now some may claim that polyploidy is the explanation; personally I think "the secret is in the water."

-Henretta T. Band

"There probably aren't many people left who are as sentimentally attached to the Waltons as I am. My friendship with Miss Peggy and Miss Lucile goes back to 1961 and includes dozens of after-supper walks out along the West Virginia road, hunting for Minie balls, watching digging wasps in the roads and paths, boating with Lucile on Mt. Lake (but Peggy was afraid of water and always waited for us on the shore), and so many evening tea-and-conversation parties that I couldn't count them. The "Peggy Pine" - a white pine I got from the road into White Pine Lodge - was planted as a sort of monument to Peggy; and last summer I thought I ought to get another one for Lucile and plant it nearby (but there was no time to fence it for protection from browsing deer). I have many wonderful memories of visits with the Waltons at Mt. Lake and Danville, over the years."

-George Byers

"How can one possibly describe the Waltons? I guess the best way for us is to think back to things which were special to us--the stump which they so lovingly put together, the stories they used to tell in the evenings, their cottage which stayed the same from year to year down to the little figurines they brought back each year and the curtains which had been made by Miss Lucile with pine cones & needles (the ones in the Pavilion are very similar). One could never go by their room in the lab that they were not busy bent over a microscope. One last thing which made them very special was the friends they made for the Station and the friends they were to us."

-Wayne & Mary Ann Angleberger



ALLOZYME L to R, Row 1: Johnny Randall, Maria Lukowsky, Chris Costanzo, Charlie Werth, Tonya Edwards, Andrea Grosse, Jim Dooley, Mike Shelton



ANIMAL BEHAVIOR L to R: William Peterson, Betsy Delicate, Steve Tan, Andy Rice, Elaine Cole, Tonya Edwards, Joe Teates, Steve Pilkenton



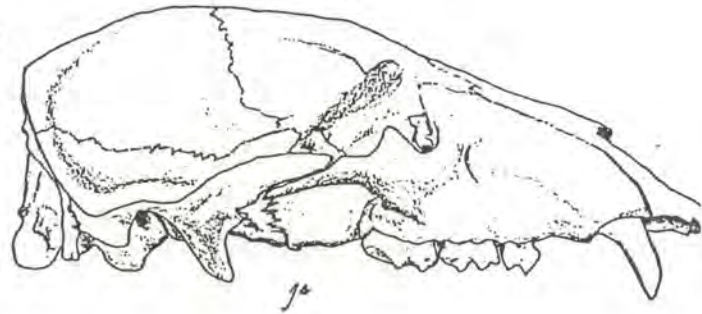
PLANT POPULATION L to R: Steve McMann, Johnny Randall, Riley Sain, Chris Costanzo, Bernie Roche, Janis Antonovics



QUANTITATIVE METHODS L to R: Peter Galusky, Debbie Durr, Andrea Grosse, Mike Lipford, Dan Madary, Herb Donovan, Ken Read, Henry Wilbur



PALEONTOLOGY L to R, Row 1: Sherri Graves, Maria Lukowsky, Jane Kidd, Mike Shelton, Terry Bowyer, Row 2: Rob Jennings, Sidney McGuffin, Joc Chamberlain



Enjoy examining regurgitated owl lunches, D.O.R. chipmunk innards, or deer fecal pellets? Like the thrill of meticulously measuring leaders of new growth in a rattlesnake infested forest to the accompaniment of 356 repetitions of "Three Blind Mice" (whistled by Rob Jennings)? Do your olfactory senses appreciate the delightful aroma of moth balls and uncleaned vole cages? Do you savor the element of risk (from both ends) involved in handling Peromyscus?



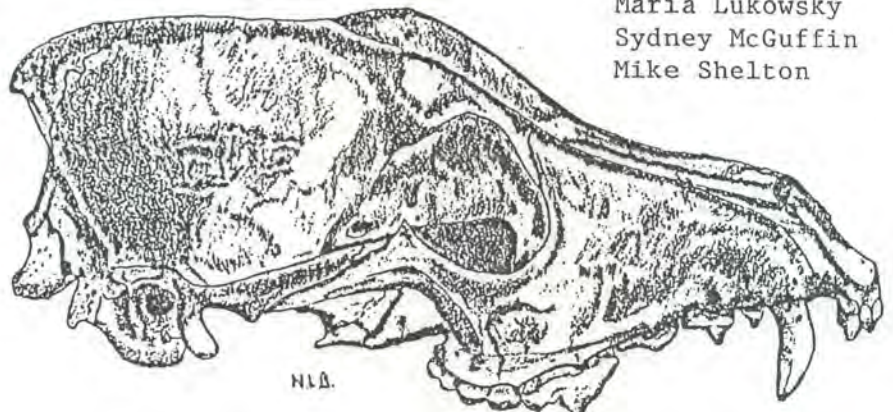
If the answer to these questions is in the affirmative, then you should have been part of Dr. Terry Bowyer's "Everything you never wanted to know about deer, but were afraid to ask" class (also known as Mammalogy/Wildlife Ecology).

Other highlights included:

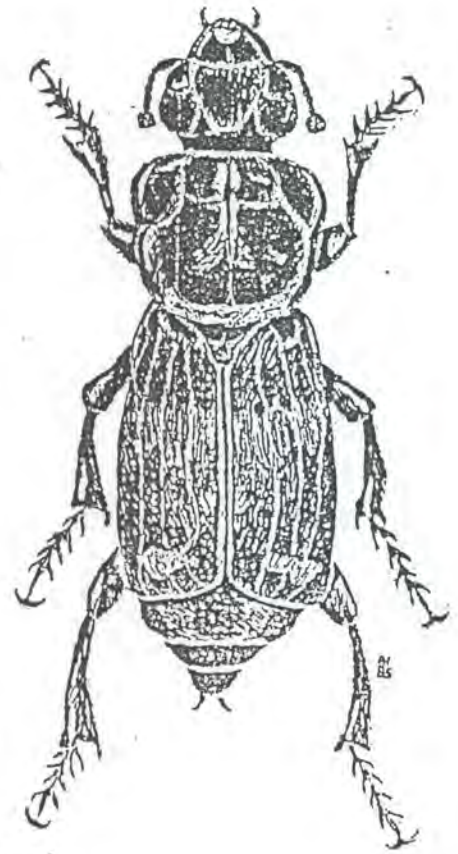
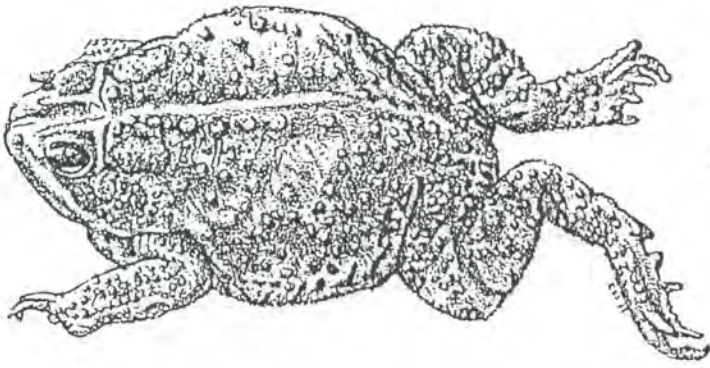
- 1) the entire class sitting motionless for hours in the mink field (waiting for deer), only to be rewarded by a solitary "hotelite" transversing our study area, not once, but twice!
- 2) Very early morning hide and seek (according to Jane) strolls through muddy mice grids.
- 3) Joc's acrobatic antics and aerial excitement, "The incredible chair balancing act".
- 4) The daily anticipation of whether Syd or 9:00 would arrive first.



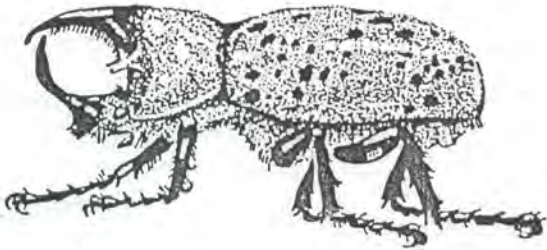
Joc Chamberlin
 Sherri Graves
 Rob Jennings
 Jane Kidd
 Maria Lukowsky
 Sydney McGuffin
 Mike Shelton



ANIMAL SOCIAL BEHAVIOR



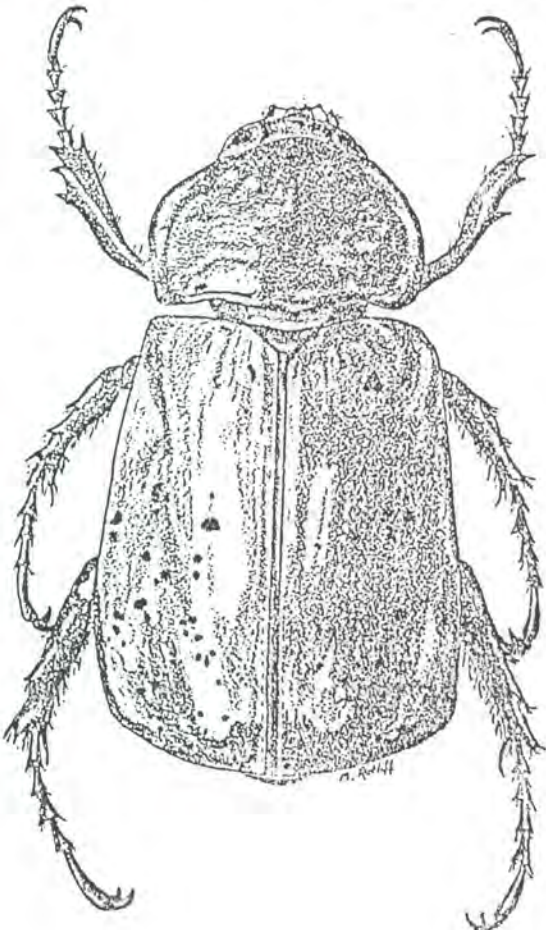
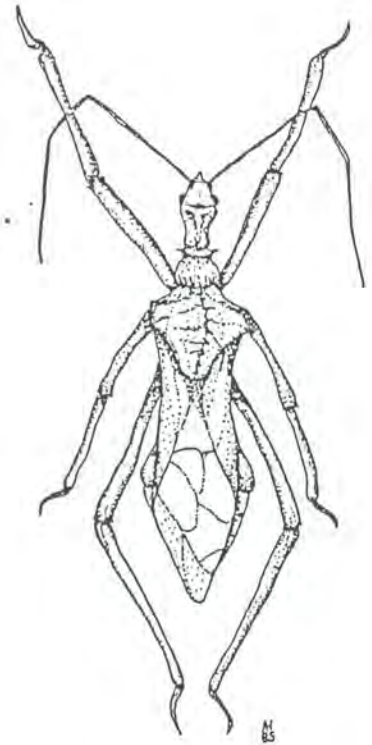
What do chasing a butterfly around a field and staying up to 3:00 a.m. have in common? Answer: Dr. Blaine Cole's Animal Social Behavior Class! From collecting a week's worth of data to interpreting everyone else's method of data collecting--these were all part of the terrific time we all spent in Dr. Cole's class. Terrific times included: the question Blaine addressed to the class, "Does anyone have an idea how the graph was drawn?" After a few seconds of blank stares, Joe Teates raised his hand and replied, "Probably with a ruler." Mr. Andy Rice quickly responded, "I'm sure it must've been a straight edge of some sort." After a few minutes of laughter, Blaine quickly restored order by expressing a straight face, and once again, addressing the class with a serious question.



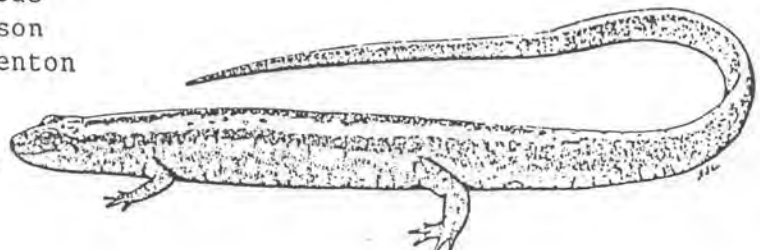
The chipmunk was the class' favorite animal and the data collecting was always fun and exciting--that is when it wasn't raining! The actual write-up was by far the most exciting time of the entire class. Taking pages upon pages down to Mary Ann to copy and in the process spending thousands of dollars was even more exciting. To make the situation more thrilling for Mary Ann, we all thought we'd take pages down at separate times, just for fun (of course)!

In all seriousness, the class was highly educational in many ways. Staying up to 2 a.m. listening to bullfrogs croak* was by far an experience I'm sure none of us can forget.

*call for mates



Eunice Cronin
Betsy Delicate
Tonya Edwards
Bill Peterson
Steve Pilkenton
Andy Rice
Steve Tan
Joe Teates



PLANT POPULATION BIOLOGY

While all the other classes are chasing chipmunks, tadpoles, deer feces--which class sits in the lab doing matrices, models, theories, math & more math? Plant Population Biology. For excitement there was always Janis & Les arguing a subtle theoretical point that nobody else understood. Janis himself is always the perfect gentleman (except in the field, we all drink beers and count leaves on Plantago--(on our hands and knees with buns up and heads down) hundreds of Plantago.

Les added a touch of 60's culture: vegetarianism, peace and love and coolness.

The rest of the cast of characters goes as follows:

Riley Sain - his funniest comment was when he asked Les & Janis if they really liked models? He said he only liked Christie Brinkley--Janis was not amused.

Johnnie Randall - nothing funny about him--just a touch of maturity for our decadent class (except for the primal scream during the final exam). He was me to tell you how cute he is.

Janet Bishop despite the fact she likes dogs better than plants, and liked to quarrel with Les, she enjoyed the class thoroughly

Bernie Roche - what can I say--she was just always so serious and intent. We know she'll go far.

Steve Gumby McMann - The world's champion vegetable eater, he was there in spirit, but his intellect so far exceeded the class level that no one ever understood him.

Chris Costanzo - our favorite little brother, as the only undergraduate in the class, he put the grad students to shame.

In conclusion, the class was a blast, if only we could have been spared the final exam!



From the collection of "Music to Run Gels by" by Charlie Werth

THE GEL JOCKEY'S WIDOW'S LAMENT

As I sat in a restaurant
Eating my dessert
The waitress said these very words
As I listened, belched, and burped.

"I see you're a gel-jockey
I didn't have to ask
For no one but a gel-jock
Swirls his coffee in a flask."

"My husband ran those starch gels
And to his death was drove
Assessing polymorphism in
The less slithy tove."

"One day in all his hurry
He neglected to turn off the power
They found his corpse in the dairy case
His expression was rather sour."

"They left him in the corner
And though he started to smell
They found his long hairs useful
For slicing up the gels."

"And now I earn my living
Performing this menial task
Waiting for someone to come and
Swirl his coffee in a flask.

BALLAD OF RAMONE
THE MISTRESS OF MOUSOZYMES

At Mountain Lake Bio
Four thousand feet high-o
There was a fair maiden
Whose name was Ramone
She subjected the meeses
To electrophoresis
Singing, "Find-em and grind-em
And run-em on gels"

Refrain:
Oh, run them on starch gels
Oh, run them on starch gels
Singing, "find-em and grind-em
And run them on gels.

She was a gel-jockey
And that's no horse hockey
For so was her major professor before
She ran desert chipmunks
And even a few skunks
Singing, "find-em and grind-em
And run them on gels."

Refrain:
Now when the mommy mice found out
What Ramone's work could sound out
They asked her if she'd testify in court
"Big bucks we will pay you
If only you'll say who
Who should be suing for mousling support"

Refrain:
Now Ramone drives a caddy
And sings "Who's your daddy?"
As all of the male mousies
Call her a nerd
"Investment parental
Is driving us mental"
And they throw up their hands
And cry "Life is absurd!"

Refrain:



MOUNTAIN MELODIES

At the Station when you rise
Do the morning bells remind you that it's raining
Are you thinkin' of biometry
And matrices and how to test hypotheses
You are living an absurdity
I joined weeks ago it quite nearly killed me
In the long run it will give gestault
Make you old and wise before your time
And the difference between me and you
I won't argue right or wrong, I don't have
time to cry...my baby.

In the evening when you're through (you're never through)
Do you wonder what the hell you have learned today
Are you thinkin', or has that stopped too
Of volleyball, and horseshoes, or a snooze.
You are living (call this living?) a 28 hour day
With all this work there isn't any time to play
But the thought comes by, why not blow this off?
And grab a beer, some tunes, and raise some hell tonite
And tomorrow back to the grind
One more week we will have to say goodbye
And the difference all this has made
I will argue right or wrong....



-Bernie Roche & Mike Lipford

PROGRESSIVE COCKTAIL PARTY

<u>THEME</u>	<u>HOSTS</u>	<u>EXPERIMENTS</u>	<u>CONTROL</u>	<u>STUDY SITE</u>	<u>TIME</u>
APATHY	Fishes (ICH!)	Who cares??	Who really cares?	DeSchweinitz	8:30
KENTUCKY DERBY	Plants/Animals	Mint Julep	Mint tea	Chapman	9:00
MEXICO	Mammalias	Tequila Sunrise	Jugo de oranja	Claytonio	Nuevo y media
REGGAE ON THE BEACH	Rasta Blaine & Co.	Rum & Coke	Ja Punch	Riopel Pond	10:30
THE MOTOWN STORY (Chapter One)	Gel Jocks	Pink Gins	Pink gingerale	The PAV	11:00 until



"And how will we know if it's raining? (Art Bulger)

"Location of Rose-breasted Grossbeak (sic) nest - above the blue car" (Anonymous from the Ornithology class)



As the summer draws to a close, it is once again time to renew our Mountain Lake Pledge. On this occasion, old-time Mountain Lakers can't help but fight back tears as they remember taking the pledge for the first time. But even more moving is the anticipation as our new initiates await this joyous celebration of brotherhood and biology, wondering why they have been so selected and only daring to hope that they are worthy of the call. This is really their night, for they are the hope of Darwin. The future of the station rests on their adherence to this pledge.

So let us now light our candles and join Sister Melissa as she leads us in our solemn recitation of the Mountain Lake Pledge.



Whenever I go to Blacksburg, I will ask at least 25 people if they need anything from K-Mart.

I will never refer to Hunan's as anything but "the Chinese restaurant."

I will attend all "bell events."

I will attend all seminars, even though there are 4 per week.

If I am a faculty member, I will ask at least one scintillating question at each seminar, preferably about some obscure statistical method.

I will wear either my Mt. Lake t-shirt or sweatshirt when leaving and returning to the Station.

I will never go out to eat without at least 10 other people.

I will always be willing to help others with data analysis, no matter how much work I have to do.

I will never arrive at the dining hall before Wayne and Mary Ann.

I will always cheerfully accept birthday cake in the face from Panzie.

I will always honor quiet hours, even if it means never having any fun.

I will always eat at least one breaded, deep-fried item per day.

I will not linger in the dining hall after meals.

I will always electrophorese or videotape my organism, no matter how irrelevant the data are to my project.

I will always play volleyball pretending I don't want to win, even though I would kill for one more point.

I will always send postcards when I am gone for more than one day.

I will never invite a guest for more than two nights.

I will not talk, but "network."
I will always be willing to rearrange my entire schedule for an impromptu seminar on scent marking in the yak.
I will always be willing to transport a trapped wild animal down the mountain no matter what it does to my new car.
I will not schedule any work or classes on July 4th.
I will always remember that cigarette butts are litter.
I will read everybody's phone messages and postcards.
I will bring every snail I find back to Hiro, no matter how useless it is to his research.
I will never expect any privacy while at the Station.
I will never expect to have any water pressure for a shower between 6 a.m. and midnight.
I will not complain that my towels never dry.
I will always wait until after office hours to do my xeroxing.
I will always use the correct garbage can for solids.
I will always be ready for a "NUN" and some fun with Sir Miles & Lady Ruth.
And finally, I will never expect too much from skits like these these at the talent show.



MT. LAKE DIRECTORY-SUMMER 1985

ALEXANDER, Helen David	Research	Laing South	Dept. of Biol. Univ. of Louisville Louisville, KY 40292
ANDERSON, Stephanie	Res. assist. (Breden)	Chapman	1017 Prospect St. Columbia, MO 65203
ANGLEBERGER, Wayne Mary Ann Tommy (14)	Bus. mgr. Secretary	Gattinger	Rt. 1, Box 152 Mt. Solon, VA 24136
ANTONOVICS, Janis Kate (15)	PLANT POP. BIOLOGY	Reed	Dept. of Botany Duke University Durham, NC 27706
ASAMI, Takahiro	Research	Laing West	Dept. of Biol., UVa Charlottesville, VA 22901
BACCUS, Ramone George Alicia 2 yrs. Dale (2 mo)	Research	Rafinesque	P.O. Box 1011 Prescott, AZ 86302
BAND, Henretta (Retta)	Research Allozyme	Laing single	Dept. of Zoology Michigan State Univ. E. Lansing, MI 48824
BARTON, Ian	Pl/animal inter	Audubon	4406 N. Vacation La. Arlington, VA 22207
BERDINE, Ashton	Field Bot.	Deschweinitz	Rt. 4, Box 419 Parkersburg, WV 26101
BISHOP, Janet	Plant Pop.	Chapman	1304 Calder Rd. McLean, VA 22101
BLANTON, Sarah	Birds	Bartram	117 Skyline Dr. Bristol, TN 37620
BOWYER, Jim	Fish	Laing North	P.O. Box 145 Earlysville, VA 22936
BOWYER, Terry Karolyn Bryan (8) Jeffrey (7)	MAMMALOGY	Hentz-Mohr	Ctr. for Envir. Studies Unity College Unity, ME 04989
BOWYER, Walter	Research	Laing North	P.O. BOX 145 Earlysville, VA 22936
BREDEN, Felix	Research	Laing NW	Div. of Biol. Sci. Univ. of Missouri Columbia, MO 65211

BROADDUS, Lynn	Research	Lainq single	606 E. Ellerbee Durham, NC 27704
BROWN, Nancy	Birds Illus.	Lainq single	230 N. 33rd St. Purcellville, VA 22132
BROYLES, Steven	Research	Deschweinitz	Dept. of Botany Univ. of Ga. Athens, GA 30602
BRUNER, KRIS	Res. asst. (Nolan)	Bartram	c/o Dr. Ellen Ketterson Dept. of Biology Indiana Univ. Bloomington, IN 47405
BULGER, Art	FISH	LeConte	Dept. of Biol., UVA Charlottesville, VA 22901
CHAMBERLIN, Joc	Mammalogy	Audubon	Rt. 5, Box 787 Winchester, VA 22601
COLE, Blaine	Research AN. BEHAV.	Catesby	Dept. of Biol., UVA Charlottesville, VA 22901
COLLEY, Jack	Research	Lainq North	Rt. 2, Box 583 Haysi, VA 24256
COSTANZO, Chris	Fish Illus. Plant Pop. Allozyme	Deschweinitz	4113 Minstrell Lane Fairfax, VA 22033
CRONIN, Eunice	Research An. Behav.	Lainq single	Dept. of Biology Belmont Abbey Belmont, NC
CRUZ, Karen	Pl/an inter Alloz.	Chapman	5911 Cherrywood Ln#304 Greenbelt, MD 20770
DAHLEN, Martha	Pl/an inter Illus.	Lainq single	Lady Ho Tung Hall 91 Pokfulam Rd. Hong Kong
DELICATE, Betsy	An. Behav.	Bartram	903 Pine St. Perrysburg, OH
DESCH, Maggie	Tech (Lawrence)	Elliott	265 Humphrey St. Apt.2 New Haven, CT 06511
DOBBINS, Jeff	Fish Alloz.	Deschweinitz	52 Crooke Pond Dr. Hilton Head, SC 29928

DONOVAN, Herbert	Quant. Methods	Deschweinitz	5920 Grandview Ave. Little Rock, AR 72207
DOOLEY, Jim	Allozyme	Deschweinitz	Dept. of Env. Sci. Univ. of Va. Charlottesville, VA 22901
DUNLAP, Donald	Allozyme	off campus	Dept. of Biology Univ. of South Dakota Vermillion, SD 57069
DURR, Deborah	Quant. Methods	Lainq single	404 Fern St., Apt. #2 Princeton, WV 24740
EDWARDS, Tonya	Fish Allozyme An. Behav.	Chapman	133 Magnolia Ave. Franklin, VA 23851
GALUSKY, Peter	Fish Quant. Methods	Deschweinitz	552 Valley Rd. Charlottesville, VA 22901
GOON, Hannah	Pl/an interactions	Chapman	71 Augusta Ave. Staten Is., NY 10312
GRAVES, Sherri	Pl/an inter Allozyme Mammalogy	Elliott	11 Ravenwood Dr. Weston, CT 06883
GROSSE, Andrea	Quant. Methods Allozyme	Chapman	1118 Savile Lane McLean, VA 22101
HALL, Carroll	Pl/an inter. Illus.	Audubon	506 Ridge Ave. Norton, VA 24273
HAWKINS, Lauraine	Res. asst. (Wolff)	off campus	D1 Dutch Village Blacksburg, VA 24060
HILL, Jim	Research	Lainq West	4106 Breezewood Ln Annandale, VA 22003
HLAVATY, Deb	Res. asst. (Cole)	Elliott	Rt. 5 Charlottesville, VA 22901
HOOVER, ANNE	Sci. Illus.	off campus	Rt. 1, Apt 1 Box 364B Blacksburg, VA 24060
ISTOCK, Alice	Res. asst. (Real/Rathcke)	Elliott	4060 Avenida del Cazador Tucson, AZ 85718

JENNINGS, Rob	Mammalogy	Audubon	1443 Grove Rd. Charlottesville, VA 22901
JOHNSTON, David Esta	BIRDS SCI. ILLUS.	Hentz-Mohr	Dept. of Biol. Geo. Mason Univ. Fairfax, VA 22030
KEEN, Hubert	Research	Hariot	Dept. Biol. Sci. SUNY Cortland, NY 13045
KEFFER, Judy	Field Bot.	Bartram	Rt. 1, Box 68A New Castle, VA 24127
KETTERSON, Ellen	Research	Burns	Dept. Biology Indiana University Bloomington, IN 47405
KIDD, Jane	Birds Mammalogy	Chapman	P.O. Box 428 Daleville, VA 24083
LAU, Robyne	Pl/an inter Allozyme	Bartram	8506 Hanford Dr. Richmond, VA 23229
LAWRENCE, Tad	Research	Lainq West	Dept. of Biology Yale University New Haven, CT 06511
LeCROY, Sara	Research Illus.	Chapman	Gulf Coast Research Lab East Beach Dr. Ocean Springs, MS 39564
LEMON, Kathy	Pl/an inter.	Chapman	1600 Grand Ave. St. Paul, MN 55105
LIPFORD, Mike	Quant. Methods	Deschweinitz	424 #C Jefferson St. Clifton, Forge, VA 24422
LUKOWSKY, Maria	Mammalogy Allozyme	Chapman	736 A Madison Ave. Charlottesville, VA 22903
LUNA, Elaine	Field Bot. Alloz.	Lainq single	161 Le Port Dr. Pensacola Beach, FL 32561
LUNDY, Kathy	Research	Lainq single	1711 Whipple Dr. #8 Blacksburg, VA 24060
McCAULEY, Dave	Research	Mitchell	Dept. of Biology Vanderbilt Univ. Nashville, TN 37235

McCoy, Earl Cheryl Elizabeth (7) Christopher (6)	PL/ANIMAL INTERAC.	Reed	Dept. of Biology Univ. of So. Florida Tampa, FL 33620
McGuffin, Sydney	Mammalogy	Bartram	5378 Black Bear Ln. Roanoke, VA 24014
McMann, Steve	Plant Pop.	Audubon	10 Burkkewood Rd. Hartsdalle, NY 16530
McManus, Mike	Res. asst. (Keen)	Audubon	8651 Gateshead Rd. Alexandria, VA 22309
Madary, Dan	Quant. Methods	Audubon	11 Atlas Rd. Basking Ridge, NJ 07920
Maldonado, Jesus	Res. asst. (Wolff)	Audubon	48 S. Earl. St. Shippensburg, PA 17257
Massey, Adrienne Lindsay (3)	Research	Laing Center	Zoology Dept. N.C. State Univ. Raleigh, NC 27650
Murray, Tiki	Trailrider	Elliott	Rt. 8, Box 149 Charlottesville, VA 22901
Nimmo, Walt Barbara Chris (14) Marsha (11) Jesse (6)	Caretaker Librarian	MLBS	Rt. 1 Pembroke, VA 24136
Nolan, Val	Research	Burns	Dept. of Biology Indiana University Bloomington, IN 47405
Peterson, Bill	An. Behav.	off campus	Heritage Acres Apt E52 Blacksburg, VA 24060
Pilkenton, Steve	An. Behav.	Deschweinitz	7901 Sunbury Lane Louisville, KY 40220
Pittman, Bert	Research	Deschweinitz	3104-A Overbrook Dr. Nashville, TN 37212
Raguso, Rob	Res. asst. (Real)	Audubon	48 South Dorchester Road Emerson, NJ 07630
Randall, Johnny	Plant Pop. Allozyme	Audubon	Rt. 3, Box 402 Blacksburg, VA 24060
Rathcke, Beverly	Research PL/ANIMAL INTERAC.	Schoew	Div. Biol. Sci. Univ. of Michigan Ann Arbor, MI 48109

RATLIFF, Mary Jim Mandy (4)	Birds Illus.	Rafinesque	Box 2741 Ferrum College Ferrum, VA 24088
READ, Ken	Quant. Methods	Lainq West	Edgewood Rd. Chapel Hill, NC 27514
REAL, Les Deede	Research PLANT POP	Maphis	Dept. of Zoology N.C. State Univ. Raleigh, NC 27607-7916
REED, RON	Res. asst. (Keen)	Audubon	Apt. 4, 337 Ferguson Rd. Freeville, NY 13068
RICE, Andy	An. Behav.	Audubon	111 Shirley St. Winchester, VA 22601
ROCHE, Bernie	Pl/an inter. Plant Pop.	Bartram Chapman	16 Hamilton Rd Glen Ridge, NJ 07028
ROLLS, Alice	Birds	Bartram	1466 Wagqaman Circle McLean, VA 22101
SAIN, Riley	Plant. Pop.	Deschweinitz	90 Reservoir Rd. Norris, TN 37828
SCHEDLER, Ruth Anne	Res. asst. (McCauley)	Chapman	1814 College Ave. Conway, AR 72032
SHAFFER, Melanie	Res. asst. (Real)	Elliott	100 W. Whitaker Mill Rd. Raleigh, NC 27608
SHELTON, Mike	Mammalogy Allozyme	Deschweinitz	649 Timberlake Dr. Danville, VA 24540
SKDUMBOURIS, Elaine	Birds Illus.	Chapman	1005 Greenwich Dr. Madison, WI 53711
SPANYER, Carroll	Res. asst. (Alexander)	Lainq South	2705 Tregaron Ave. Jeffersontown, KY 40299
STEELE, Robert	Birds Allozyme	Deschweinitz	P.O. Box 392 Toano, VA 23168
STUCKER, Jeff	Field Bot. Illus.	Audubon	6915 Custis Pkwy Falls Church, VA 22042
SUTTENFIELD, Sallie	Res. asst. (Wolff)	off campus	713 Ellett Rd. Blacksburg, VA 24060
TABER, Gail	Field Bot. Allozyme	Elliott	P.O. Box 392 Toano, VA 23168

TAN, Stephen	An. Behav.	Deschweinitz	85 Columbia Ave. Berkeley Hts, NJ 07922
TATUM, David	Birds Illus.	Audubon	108 City Limits Rd. Brandon, MS 39042
TEATES, Joe	An. Behav.	Audubon	310 Marion St. Winchester, VA 22601
TRAVIS, Joe Ann Helen (5mo.)	QUANT. METHODS	Michaux	Dept. of Biol. Sci. Florida St. Univ. Tallahassee, FL 32306
VOGEL, Eve	Res. asst. (Lawrence)	Elliott	46 Parker St. Cambridge, MA 02138
WATSON, Frank	FIELD BOTANY	Holbrook	Dept. of Biology Muhlenberg College Allentown, PA 18104
WERTH, Charlie	ALLOZYME	Banister	Dept. of Botany Univ. of Kansas Lawrence, KS 66045
WILBUR, Henry Becky Helen (3)	QUANT. METHODS	LeConte	Dept. of Zoology Duke Univ. Durham, NC 27706
WILLS, Thomas	Fish	Deschweinitz	2525 Cedar Ridge Ln. Charlottesville, VA 22901
WOHLTMAN, Melissa	Res. asst. (Keen) (Ketterson)	Elliott	111 W. Kimberly Dr. Syracuse, NY 13219
WOLF, Licia	Research	Lainq single	Dept. of Biology Indiana Univ. Bloomington, IN 47405
WOLFF, Jerry	DIRECTOR Research	Clayton	Dept. of Biology Univ. of Va. Charlottesville, VA 22901
ZIEGENFUS, Charles "Ziq"	Res. asst. (Nolan)	Lainq West	Math & Comp Sci. Dept James Madison Univ. Harrisonburg, VA 22801



View from our porch at Mountain Lake
Biological Station - with Bob Bear + grotal
Summer 1985

A N N O U N C I N G
MOUNTAIN LAKE BIOLOGICAL STATION
SUMMER FIELD COURSES 1986

First Term (June 15 - July 19)

Behavioral Ecology
H. Ronald Pulliam
University of Georgia
Jerry O. Wolff
University of Virginia

Biology of Insects
George W. Byers
University of Kansas

Herpetology
Hubert Keen
SUNY-Cortland

Workshop in Allozyme Techniques
Ramone Baccus
Yavapai College

Second Term (July 20 - August 22)

Evolutionary Genetics
Bruce Grant
College of William and Mary

Natural History of the Southern Appalachians
(undergraduate course)
Robert C. Simpson
Lord Fairfax Community College

Quantitative Methods in Field Biology
Joseph Travis
Florida State University
Henry Wilbur
Duke University

Nature Photography (undergraduate course)
Robert C. Simpson
Lord Fairfax Community College

Workshop in Allozyme Techniques
Charles R. Werth
University of Kansas

Scholarships Available: Service Awards for students covering room and board costs.

Post-Doctoral Research Awards (10 weeks)

For further information and application, write to:

Dr. Blaine J. Cole, Director
Mountain Lake Biological Station
Room B-64 Gilmer Hall
University of Virginia
Charlottesville, VA 22901